



Oxford Cambridge and RSA

Tuesday 14 June 2022 – Morning

**GCSE (9–1) Geography B
(Geography for Enquiring Minds)**

J384/03 Geographical Exploration

Resource Booklet

Time allowed: 1 hour 30 minutes



INSTRUCTIONS

- Do **not** send this Resource Booklet for marking. Keep it in the centre or recycle it.

INFORMATION

- This document has **12** pages.

Fig. 1 Map of England



Fig. 2 Population Pyramids for Milton Keynes and England, 2020

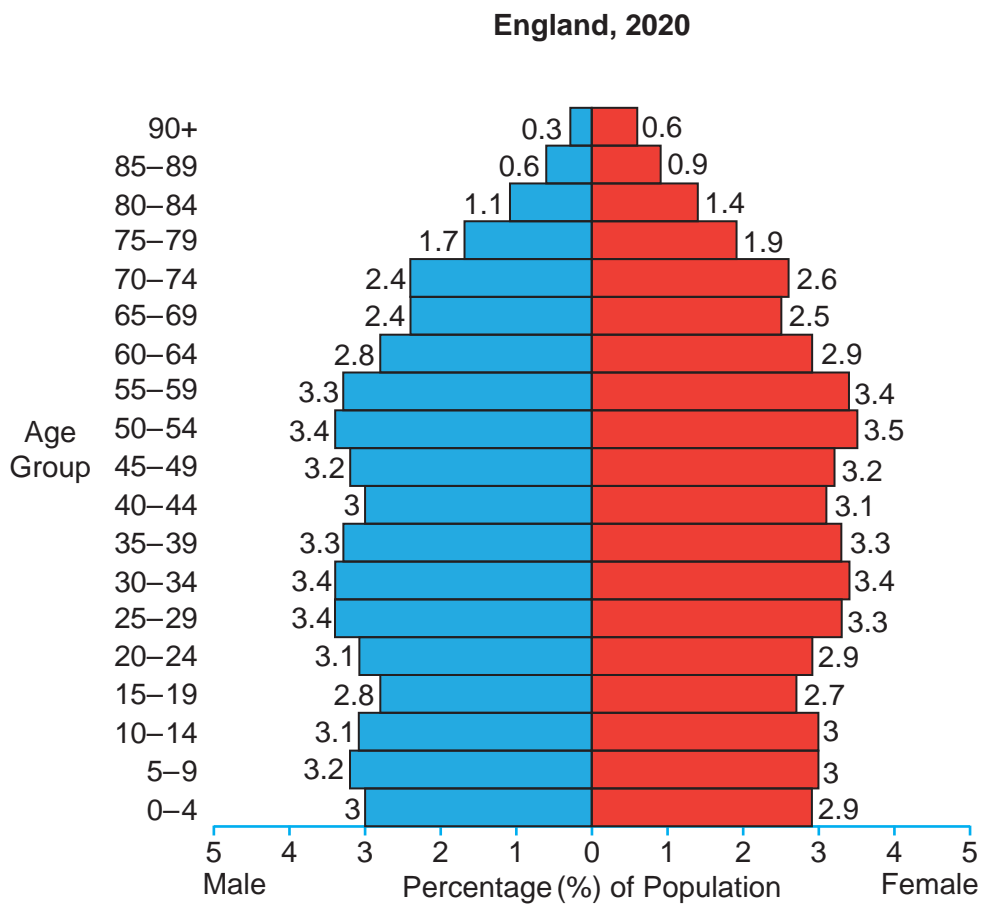
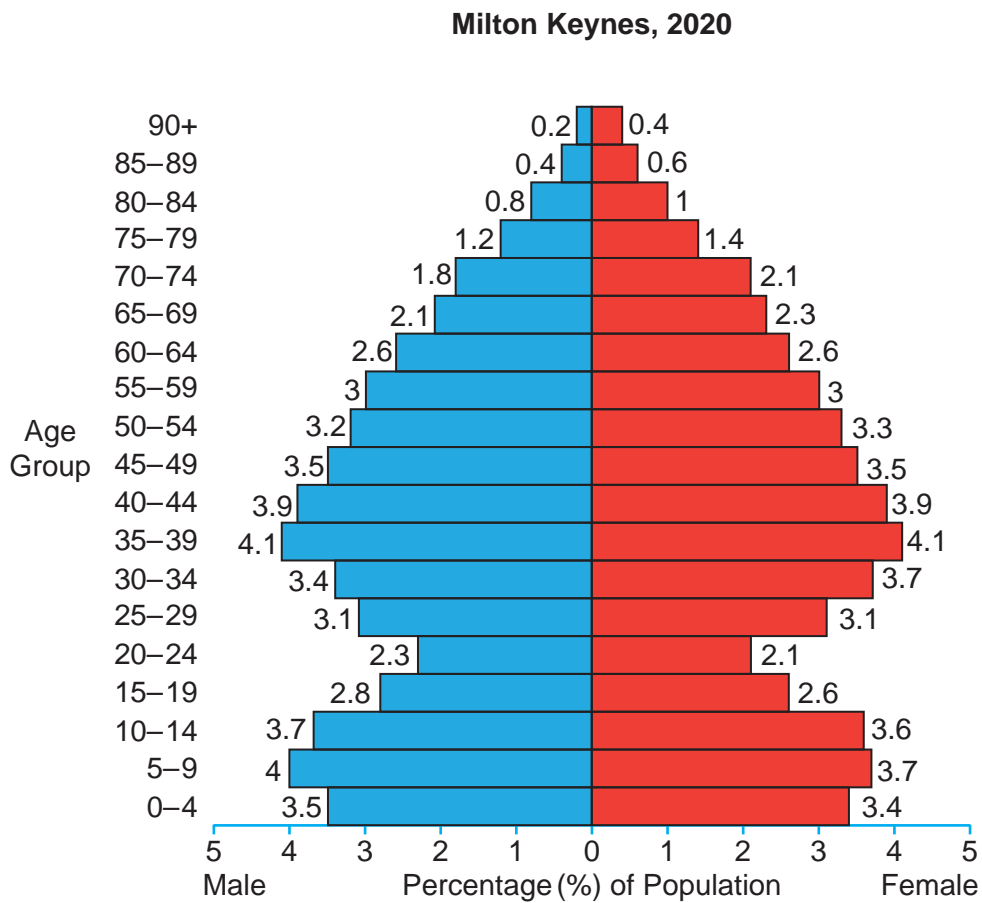
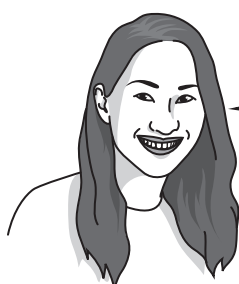


Fig. 3 Different views about Milton Keynes



Leader of Milton Keynes
Business Link

Milton Keynes is a brilliant place to own a business. There are lots of great office facilities and it is never a problem getting skilled workers to work for us – in fact more jobs were created in Milton Keynes over the last decade than anywhere else in the UK!



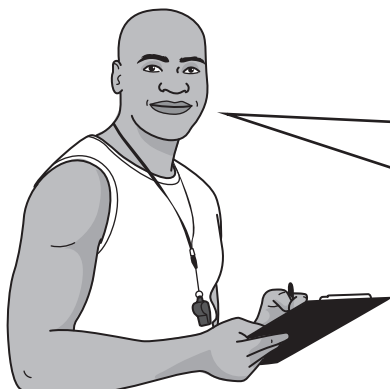
22 year old

I love living in Milton Keynes. I have a great flat in the city centre that is really near restaurants and pubs and it's only a five minute walk from work. However, it is very difficult to get around the rest of the city. Bus journeys are slow, with lots of stops, so I tend to take taxis instead.



Young family

Milton Keynes is like living in a village within a city – we love our friendly neighbourhood with small shops and playgrounds. However, we find it really frustrating getting to the bigger shops and supermarkets by car as we often get stuck in traffic at roundabouts.



Personal trainer

Milton Keynes is the only city where you can run a marathon without going on any roads and where there are parks and green spaces all around you! It's a great place to stay fit and healthy. I wish that they could do more to encourage people to cycle and walk and not use their cars.

BLANK PAGE

Fig. 4 Annotated map of Milton Keynes, 1960

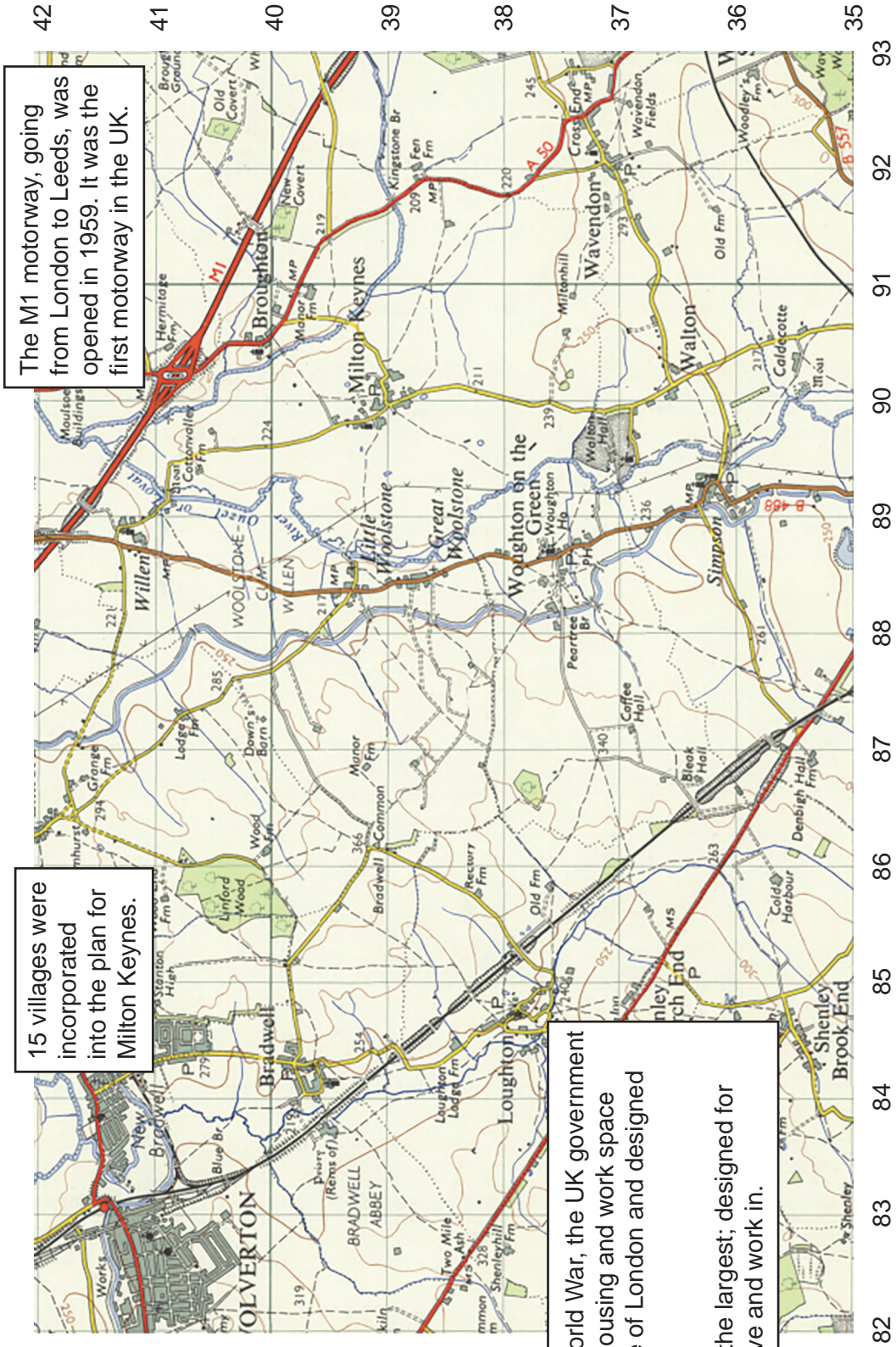
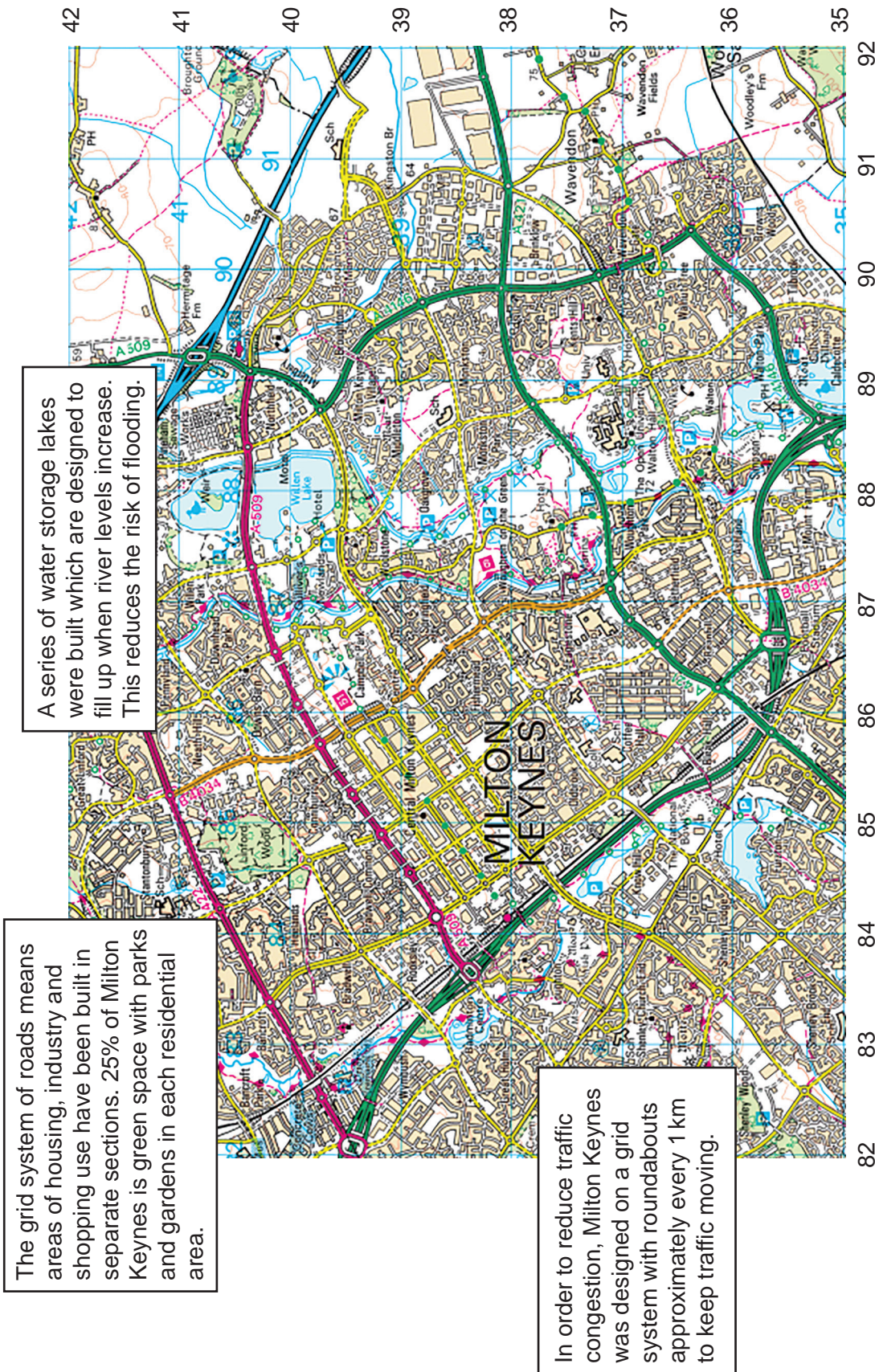
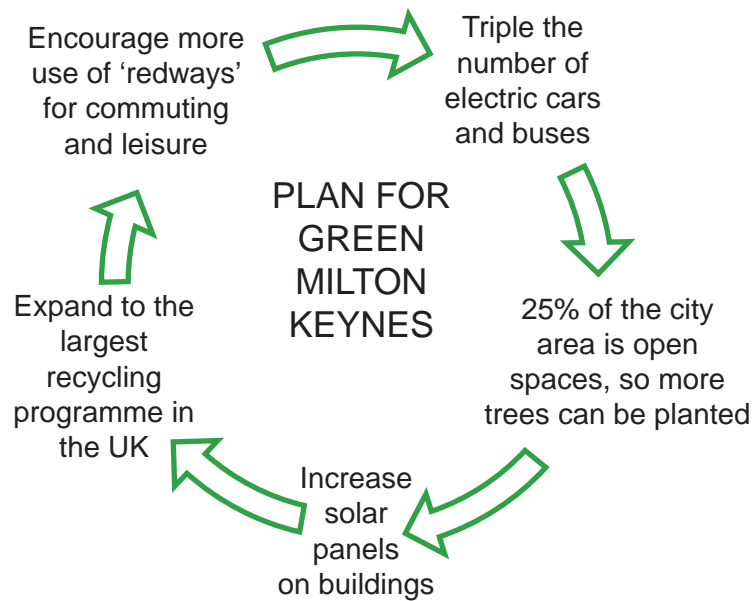
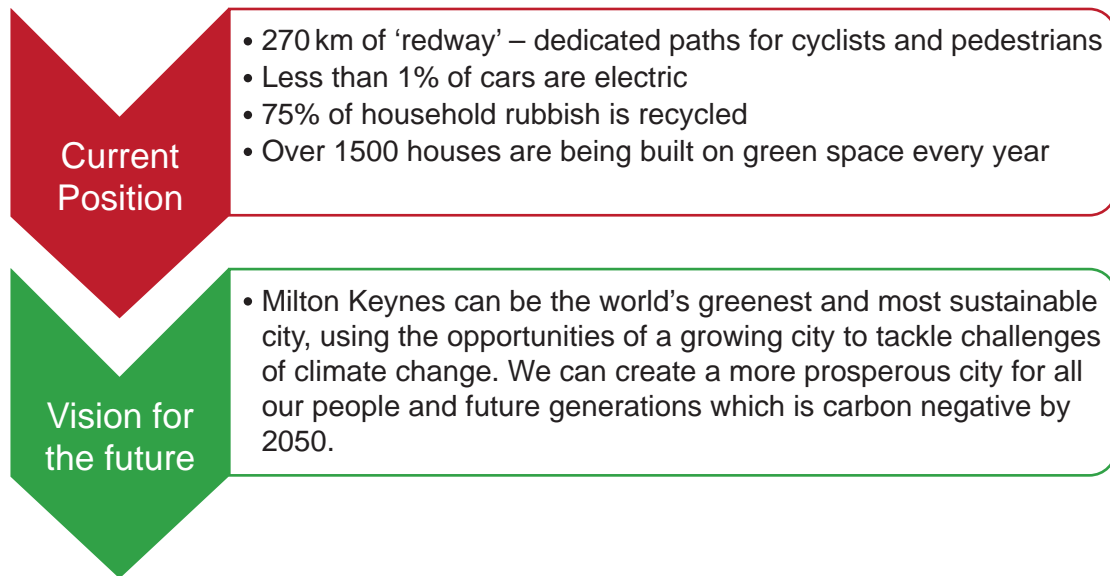


Fig. 5 Annotated map of Milton Keynes, 2020



The maps (Fig. 4 and Fig. 5) show the same area and at the same scale.

Fig. 6 Green Energy Plans in Milton Keynes





A 'redway' around one of the water storage lakes. This gives people the opportunity to enjoy the area on foot or by bike. More trees will be planted as part of the plans for green Milton Keynes.



There is a small bike hire scheme in Milton Keynes. This could be expanded to more areas of the city.



The housing areas are all linked to the city centre by the 'redways' and have large open parks.

Plans to improve the city centre	Cost
Parks and gardens maintenance	£188 500
Solar panels on council buildings	£214 500
Mobile phone app to help people use the city's public transport	£25 000
Electric charging points for cars	£136 000
Maintenance of 'redways' (dedicated paths for cyclists and pedestrians)	£265 000
Additional electric buses	£171 000

OCR

Oxford Cambridge and RSA

Copyright Information

OCR is committed to seeking permission to reproduce all third-party content that it uses in its assessment materials. OCR has attempted to identify and contact all copyright holders whose work is used in this paper. To avoid the issue of disclosure of answer-related information to candidates, all copyright acknowledgements are reproduced in the OCR Copyright Acknowledgements Booklet. This is produced for each series of examinations and is freely available to download from our public website (www.ocr.org.uk) after the live examination series. If OCR has unwittingly failed to correctly acknowledge or clear any third-party content in this assessment material, OCR will be happy to correct its mistake at the earliest possible opportunity.

For queries or further information please contact The OCR Copyright Team, The Triangle Building, Shaftesbury Road, Cambridge CB2 8EA.

OCR is part of Cambridge University Press & Assessment, which is itself a department of the University of Cambridge.